



Gross Stitch Collection

Designed Exclusively for DMC Corporation by Brooke Nolan of Brooke's Books Publishing

For personal use only.

This publication may not be sold or distributed in any form. Thank you!



Featuring

DMC's

Gloris Threads



Gross Stitch Collection

Designed Exclusively for DMC Corporation by Brooke Nolan of Brooke's Books Publishing

| My Working Mom



Personalize with skin tone, hair & eye color modifications.

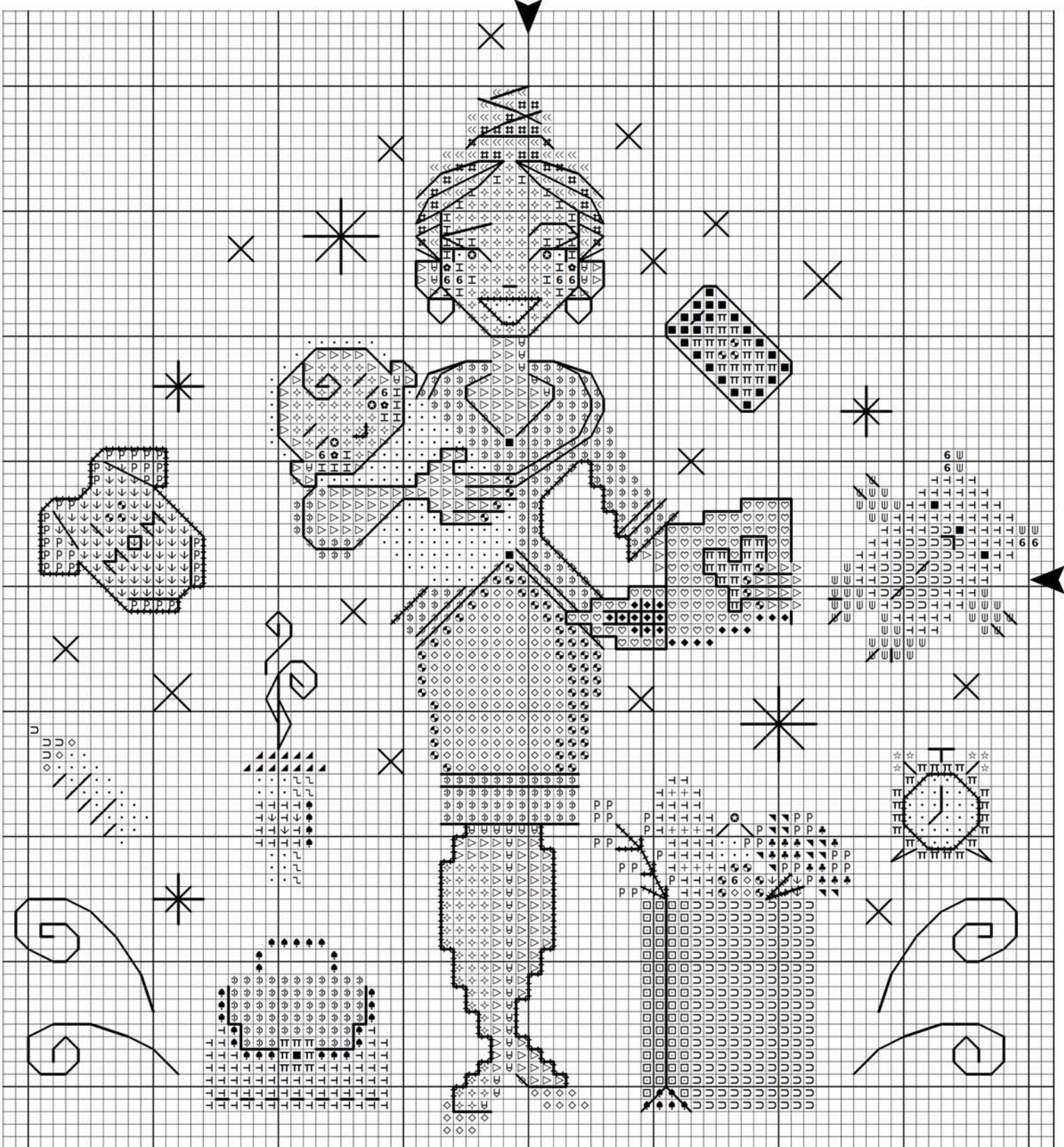
DMC Corporation - ©2017 All rights reserved



Gross Stitch Collection

Designed Exclusively for DMC Corporation by Brooke Nolan of Brooke's Books Publishing

| My Working Mom





Gross Stitch Collection

Designed Exclusively for DMC Corporation by Brooke Nolan of Brooke's Books Publishing

My Working Mom

The model was stitched with DMC floss over two threads on 28 count DMC Blue Glass Monaco fabric.
Dimensions: 82 x 89 stitches - Approximately 6" x 6.25"

In this order, cross stitch and back stitch the piece.

Complete the Teddy Bear by making a tiny bow with 6 plies of Coloris 4502 Camelia and tack it under the bear's chin with 1 ply of the same floss..

Finish the piece as desired.

Use 2 plies floss to cross stitch on fabric

Cross Stitch Key			
Symbols	DMC	Color	Skeins
•	5200	Snow White	
■	310	Black	
◇	951	Peach Lt	
▷	950	Spicy Peach Lt	
⊂	3773	Spicy Peach Md	
⊃	3713	Salmon Vy Lt	
6	3326	Rose Lt	
⊕	3688	Mauve Md	
<<	3046	Yellow Beige Md	
#	167	Yellow Beige Vy Dk	
└	3823	Ult Pale Yellow	
◇	3805	Cyclamen Pink	
⊗	3804	Dk Cyclamen Pink	
+	738	Tan Vy Lt	
⊂	437	Tan Lt	
└	435	Brown Vy Lt	
⊃	420	Hazel Nut Dk	
⊂	434	Brown Lt	
♠	433	Brown Md	
▲	898	Coffee Brown Vy Dk	
▼	472	Avocado Green Ult Lt	
P	581	Moss Green	
♣	904	Parrot Green Vy Dk	
▼	935	Avocado Green Vy Dk	
♥	318	Steel Gray Lt	
◆	317	Pewter Gray	
⊗	3843	Electric Blue	
Π	E168	Silver	
☆	E3821	Gold	
⊕	4502	Camelia	

Back Stitch Key

Symbols	DMC	Location
—	310	Mom: (2 plies) Eyelashes / Jacket: (1 ply) Collar details, stripes on sleeves & hem / Skirt: (1 ply) Stripes on hem / Shoes: (1 ply) Top edges / Teddy: (2 plies) Mouth & tummy stitches / Baby: (1 ply) Eyelashes / Laptop: (1 ply) Keyboard & heart / Clock: (1 ply) Hands, feet, bell stems & top button / Briefcase: (1 ply) Top flap & bottom stitches / Onsie: (1 ply) Lettering
—	898	Mom: (2 plies) Nose, (1 ply) Spaces between fingers / Coffee Cup: (1 ply) Steam
—	3823	Mom: (2 plies) Hair / Background Sparkles: (2 plies)
—	167	Baby: (2 plies) Curl
+++	3773	Mom: (1 ply) Legs
—	5200	Water Bottle In Grocery Bag: (2 plies) Top sides
—	434	Mom: (2 plies) Eyebrows, (1 ply) Face & ears outline, hand & arm outline / Baby: (2 plies) Eyebrows, (1 ply) Face & ears outline
—	437	Teddy: (2 plies) Claws / Grocery Bag: (2 plies) Folding seam down side
+++	3804	Mom: (2 plies) Mouth / Jacket: (1 ply) Outline sides of peplum, waist & under right arm / Baby: (2 plies) Mouth / Clock: (2 plies) Face outline
+++	904	Onsie: (1 ply) Outline / Veggies In Grocery Bag: (2 plies) Stems
—	3843	Bottle: (1 ply) Measuring marks
—	E168	Mom: (2 plies) Earrings / Smart Phone: (2 plies) Outline / Laptop: (2 plies) Outline / Onsie: (2 plies) Lines at shoulders and leg openings
—	4502	4 Swirls (2 plies) At the bottom

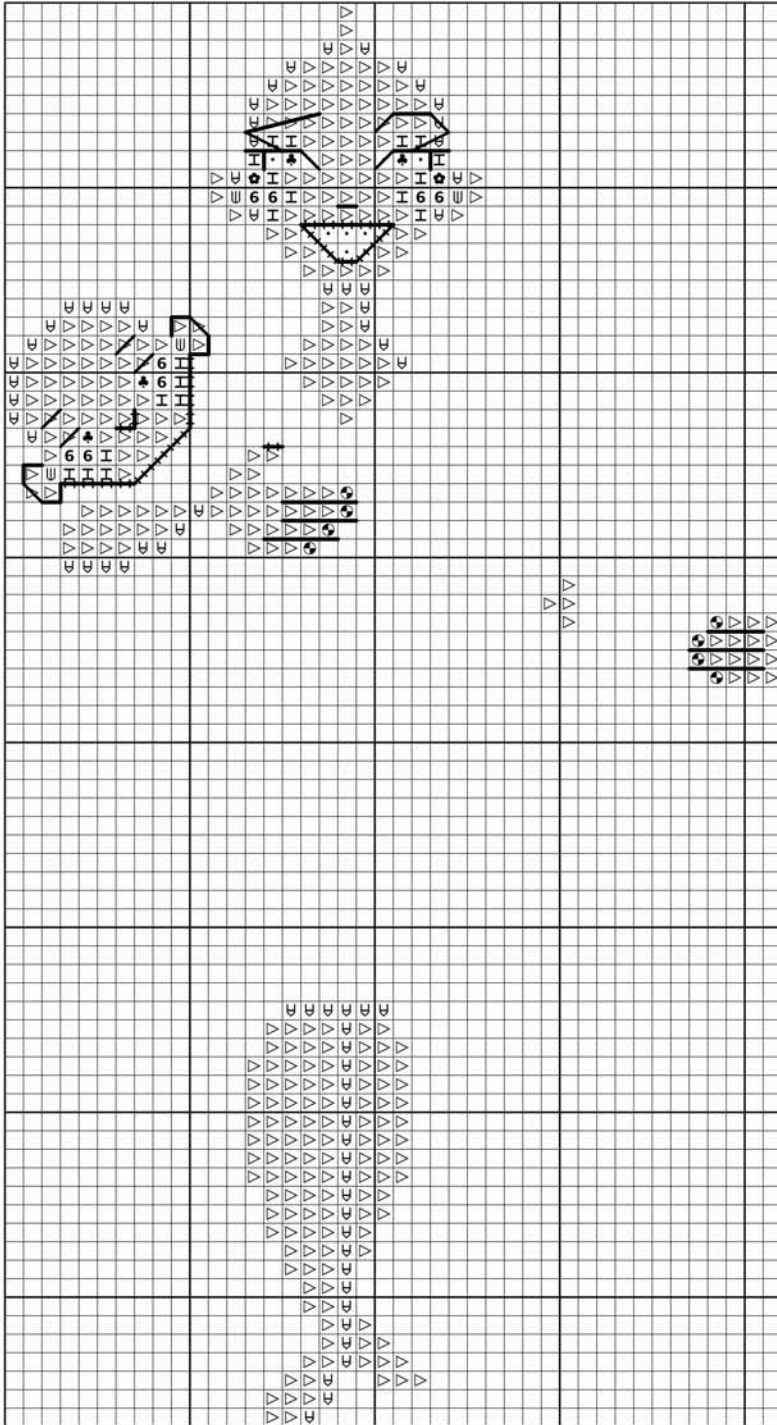


Gross Stitch Collection

Designed Exclusively for DMC Corporation by Brooke Nolan of Brooke's Books Publishing

My Working Mom

Medium Light Skin Tone Mod.



Use 2 plies floss to cross stitch on fabric

Cross Stitch Key

Symbols	DMC	Color	Skeins
•	5200	Snow White	
▽	950	Spicy Peach Lt	
◁	3773	Spicy Peach Md	
⊖	434	Brown Lt	
♣	904	Parrot Green Vy Dk	
H	3713	Salmon Vy Lt	
6	3326	Rose Lt	
⊗	3688	Mauve Md	
⊙	3804	Dk Cyclamen Pink	

Back Stitch Key

Symbols	DMC	Location
	310	Mom: (2 plies) Eyelashes / Baby: (1 ply) Eyelashes
	434	Baby: (2 plies) Eyebrows
	433	Baby: (1 ply) Ears / Mom (2 plies) Eyebrows & lines between fingers
	898	Mom: (2 plies) Nose
	3773	Baby: (2 plies) Outline of chin
	3804	Baby: (2 plies) Mouth / Mom: (2 plies) Mouth

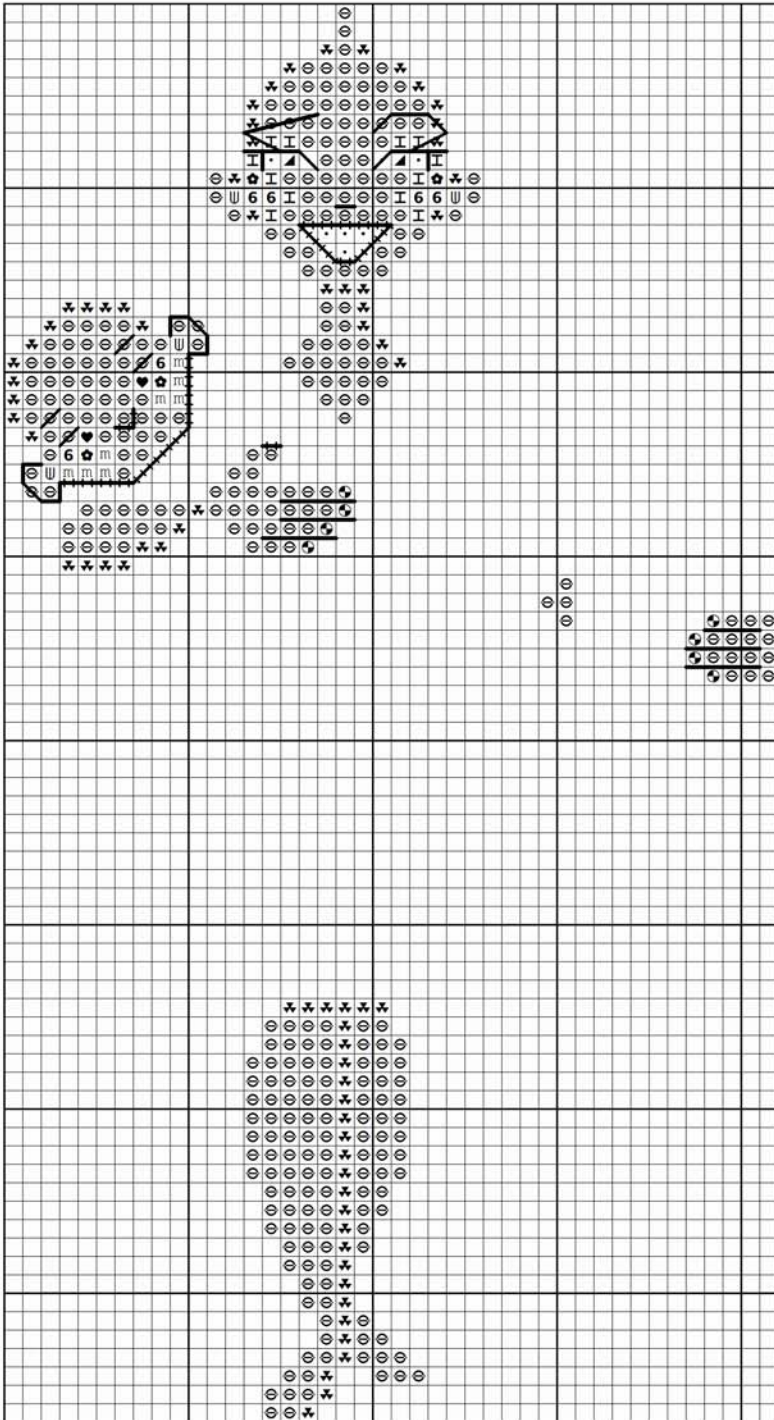


Gross Stitch Collection

Designed Exclusively for DMC Corporation by Brooke Nolan of Brooke's Books Publishing

My Working Mom

Medium Dark Skin Tone Mod.



Use 2 plies floss to cross stitch on fabric

Cross Stitch Key

Symbols	DMC	Color	Skeins
•	5200	Snow White	1
⊗	842	Beige Brown Vy Lt	1
⋈	841	Beige Brown Lt	1
∩	434	Brown Lt	1
▲	898	Coffee Brown Vy Dk	1
I	3713	Salmon Vy Lt	1
m	224	Shell Pink Vy Lt	1
⊛	3688	Mauve Md	1
6	3326	Rose Lt	1
♥	333	Blue Violet Vy Dk	1
⊕	3804	Dk Cyclamen Pink	1

Back Stitch Key

Symbols	DMC	Location
	310	Mom: (2 plies) Eyelashes / Baby: (1 ply) Eyelashes
	841	Baby: (1 ply) Eyebrows & ears / Mom: (2 plies) Eyebrows & nose, (1 ply) Lines between fingers
≡≡	841	Baby: (2 plies) Outline of chin
≡≡	3804	Mom: (2 plies) Mouth / Baby: (2 plies) Mouth

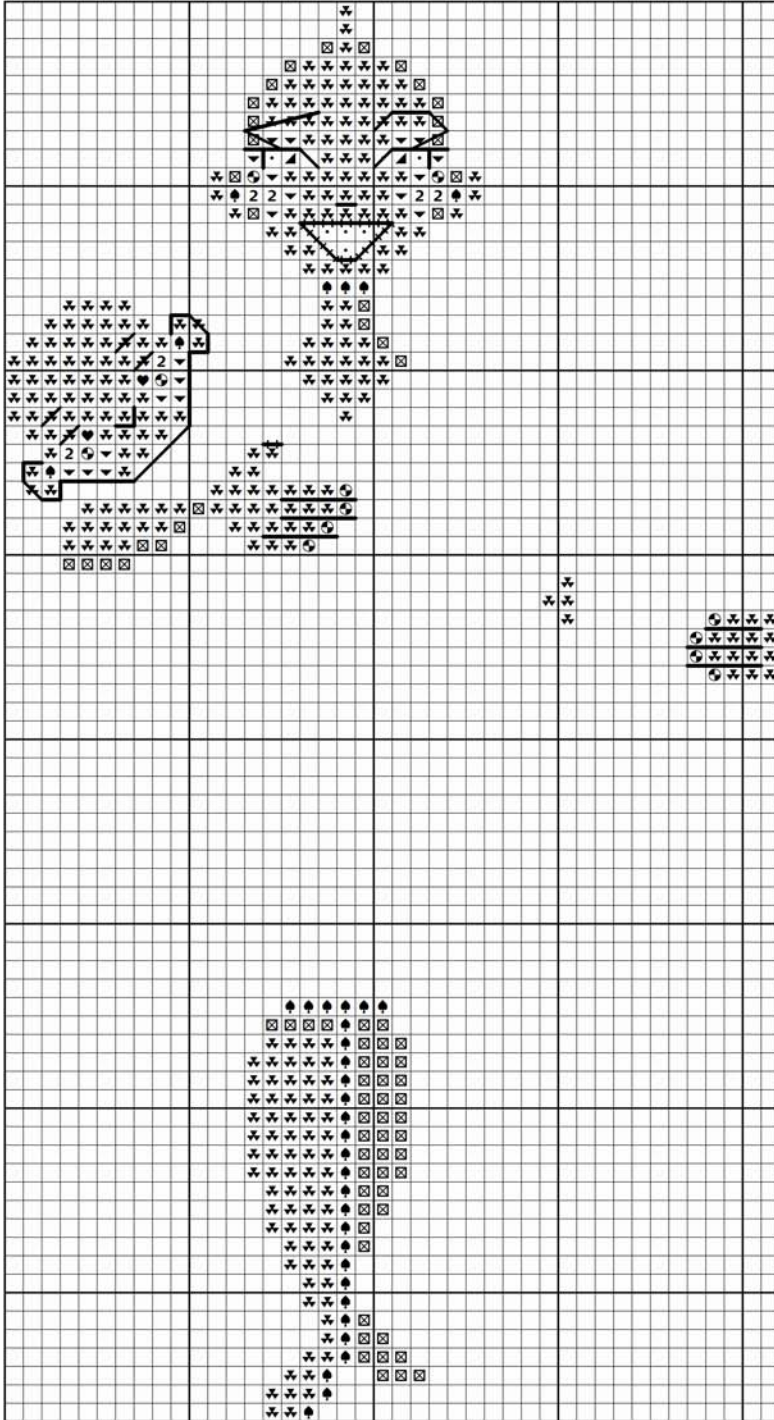


Gross Stitch Collection

Designed Exclusively for DMC Corporation by Brooke Nolan of Brooke's Books Publishing

My Working Mom

Dark Skin Tone Mod.



Use 2 plies floss to cross stitch on fabric

Cross Stitch Key

Symbols	DMC	Color	Skeins
•	5200	Snow White	
✦	841	Beige Brown Lt	
⊠	840	Beige Brown Md	
♠	433	Brown Md	
▲	898	Coffee Brown Vy Dk	
♥	333	Blue Violet Vy Dk	
▼	223	Shell Pink Lt	
2	3687	Mauve	
⊙	3804	Dk Cyclamen Pink	

Back Stitch Key

Symbols	DMC	Location
	310	Mom: (2 plies) Eyelashes, eyebrows & nose / Baby: (1 ply) Eyelashes, eyebrows, (2 plies) Mouth
	433	Baby: (1 ply) Ears & outline of chin
	898	Mom: (1 ply) Lines between fingers
	3804	Mom: (2 plies) Mouth

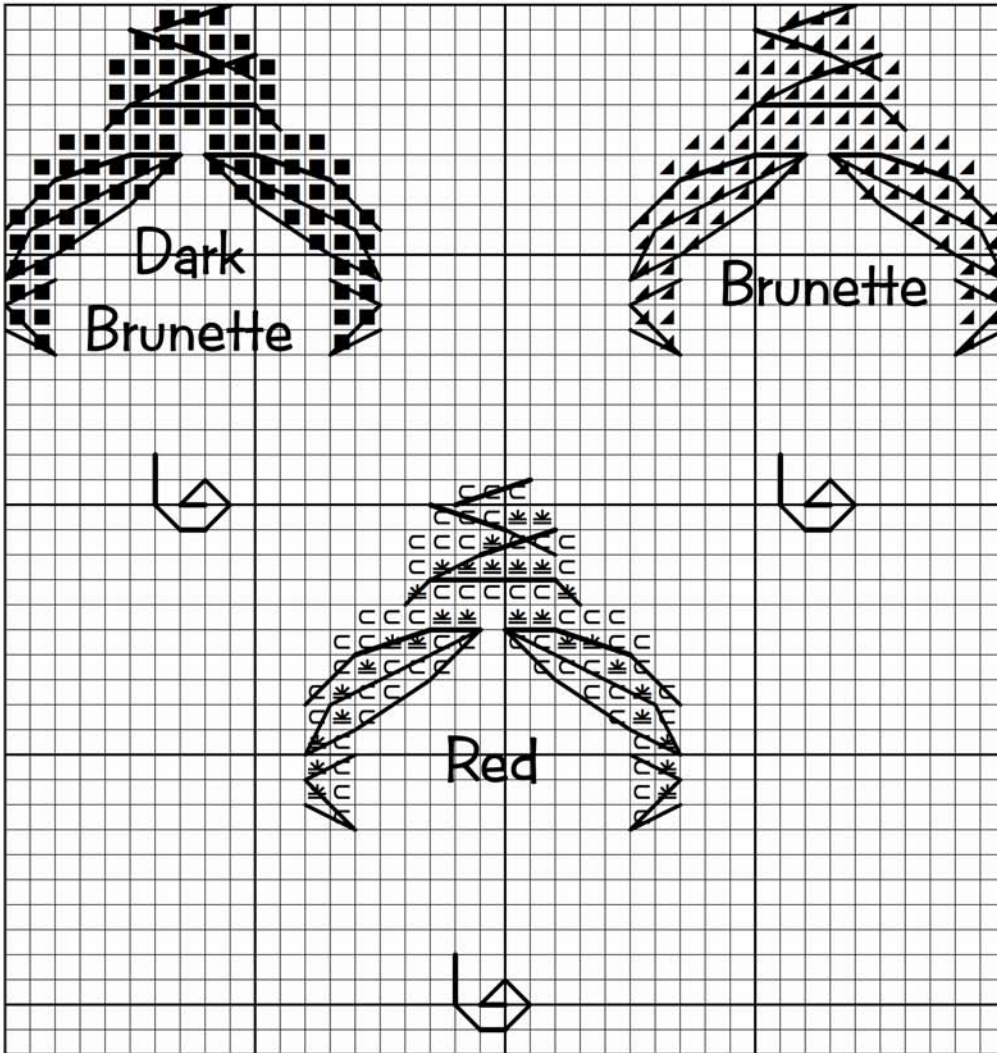


Gross Stitch Collection

Designed Exclusively for DMC Corporation by Brooke Nolan of Brooke's Books Publishing

My Working Mom

Hair Color Mods



Use 2 plies floss to cross stitch on fabric

Cross Stitch Key

Symbols	DMC	Color	Skains
■	310	Black	
▲	898	Coffee Brown Vy Dk	
✳	920	Copper Md	
∩	3776	Mahogany Lt	

Back Stitch Key

Location	DMC
Dk Brunette: (2 plies) Lines / Brunette Baby's Curl: (2 plies)	898
Dk Brunette Baby's Curl: (1 ply)	310
Brunette: (2 plies) Lines	434
Red: (2 plies) Lines	722
Red Baby's Curl: (2 plies)	3776



Gross Stitch Collection

Designed Exclusively for DMC Corporation by Brooke Nolan of Brooke's Books Publishing

I My Work At Home Mom



Personalize with skin tone, hair & eye color modifications.

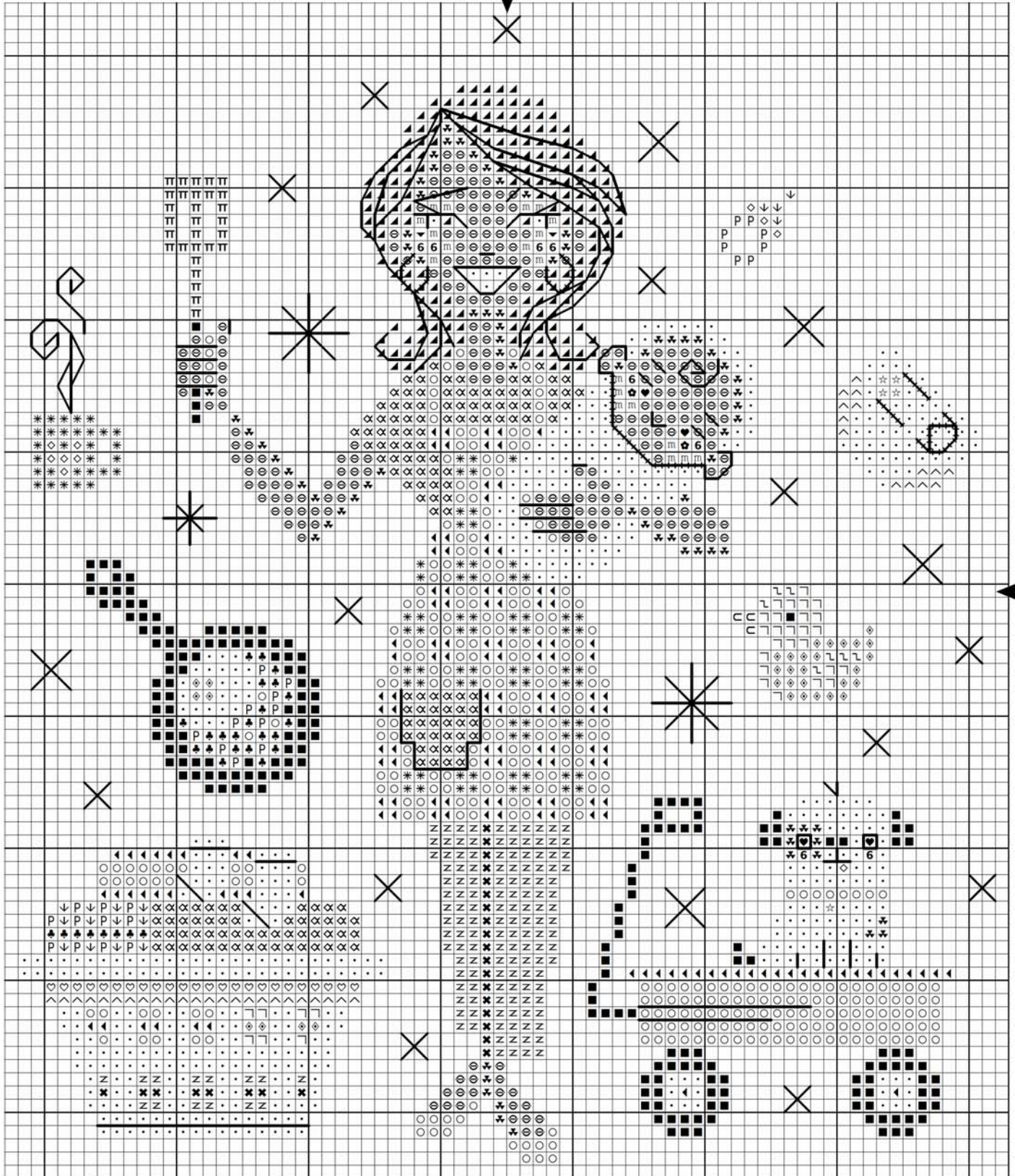
DMC Corporation - ©2017 All rights reserved



Gross Stitch Collection

Designed Exclusively for DMC Corporation by Brooke Nolan of Brooke's Books Publishing

| My Work At Home Mom





Gross Stitch Collection

Designed Exclusively for DMC Corporation by Brooke Nolan of Brooke's Books Publishing

My Work At Home Mom

The model was stitched with DMC floss over two threads on 28 count DMC Blue Glass Monaco fabric.
Dimensions: 74 x 87 stitches - Approximately 5.25" x 6.25"

In this order, cross stitch and back stitch the piece.

Finish the piece as desired.

Use 2 plies floss to cross stitch on fabric

Cross Stitch Key

Symbols	DMC	Color	Skeins
•	5200	Snow White	
■	310	Black	
⊗	842	Beige Brown Vy Lt	
✕	841	Beige Brown Lt	
▲	898	Coffee Brown Vy Dk	
6	3326	Rose Lt	
▼	223	Shel Pink Lt	
∩	224	Shell Pink Vy Lt	
⊕	3688	Mauve Md	
◇	3805	Cyclamen Pink	
*	819	Baby Pink Lt	
○	666	Bright Red	
◀	498	Christmas Red Dk	
└	3823	Ult Pale Yellow	
┘	726	Topaz Lt	
◇	742	Tangerine Lt	
C	3776	Mahogany Lt	
▼	472	Avocado Green Ult Lt	
P	581	Moss Green	
♣	904	Parrot Green Vy Dk	
^	415	Pearl Gray	
♥	318	Steel Gray Lt	
Z	932	Antique Blue Lt	
✕	930	Antique Blue Dk	
♥	333	Blue Violet Vy Dk	
Π	E168	Silver	
☆	E3821	Gold	
⊗	4512	States	

Back Stitch Key

Symbols	DMC	Location
—	310	Mom: (2 plies) Eyelashes, (1 ply) Apron pocket / Baby: (1 ply) Eyelashes / Doggie: (1 ply) Mouth & hair
—	898	Mom: (2 plies) Eyebrows & nose, (1 ply) Lines between fingers / Doggie: (1 ply) Forelegs & outline of eyes / Baby: (2 plies) Curl, (1 ply) Eyebrows & outline of ears / Coffee mug: (1 ply) Steam
—	434	Mom: (2 plies) Lines in hair
—	5200	Wagon: (2 plies) Stripes
—	666	Mom: (2 plies) Mouth & thumb nails / Laundry: (1 ply) Lines on socks / Baby: (2 plies) Mouth
+++	841	Baby: (2 plies) Outline of chin
—	318	Laundry: (2 plies) Horizontal line on bottom of basket
—	3823	Background: (2 plies) Sparkles
+++	3821	Mom: (2 plies) Earrings / Diaper: (2 plies) Safety pin



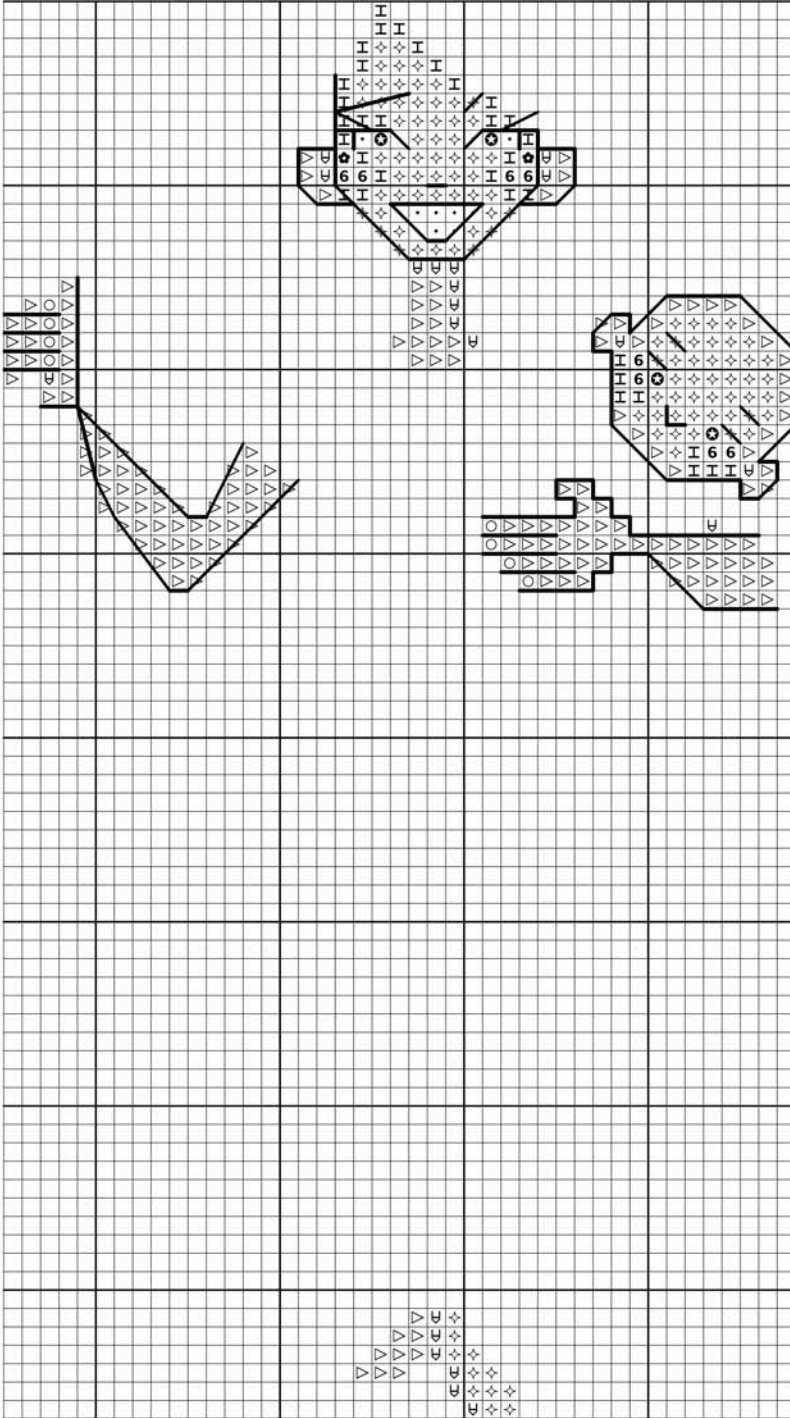
Gross Stitch Collection

Designed Exclusively for DMC Corporation by Brooke Nolan of Brooke's Books Publishing



My Work At Home Mom

Light Skin Tone Mod.



Use 2 plies floss to cross stitch on fabric

Cross Stitch Key

Symbols	DMC	Color	Skeins
•	5200	Snow White	
✦	951	Peach Lt	
▽	950	Spicy Peach Lt	
◁	3773	Spicy Peach Md	
H	3713	Salmon Vy Lt	
6	3326	Rose Lt	
⊗	3688	Mauve Md	
⊕	3843	Electric Blue	
○	666	Bright Red	

Back Stitch Key

Symbols	DMC	Location
	310	Mom: (2 plies) Eyelashes / Baby: (2 plies) Eyelashes
	434	Mom: (2 plies) Eyebrows, (1 ply) Outline face, ears, arms & hands / Baby: (2 plies) Eyebrows, (1 ply) Outline head & ears
	898	Mom: (2 plies) Nose, (1 ply) Lines between fingers / Baby: (2 plies) Mouth
	666	Mom: (2 plies) Mouth & thumb nails / Baby: (2 plies) Mouth



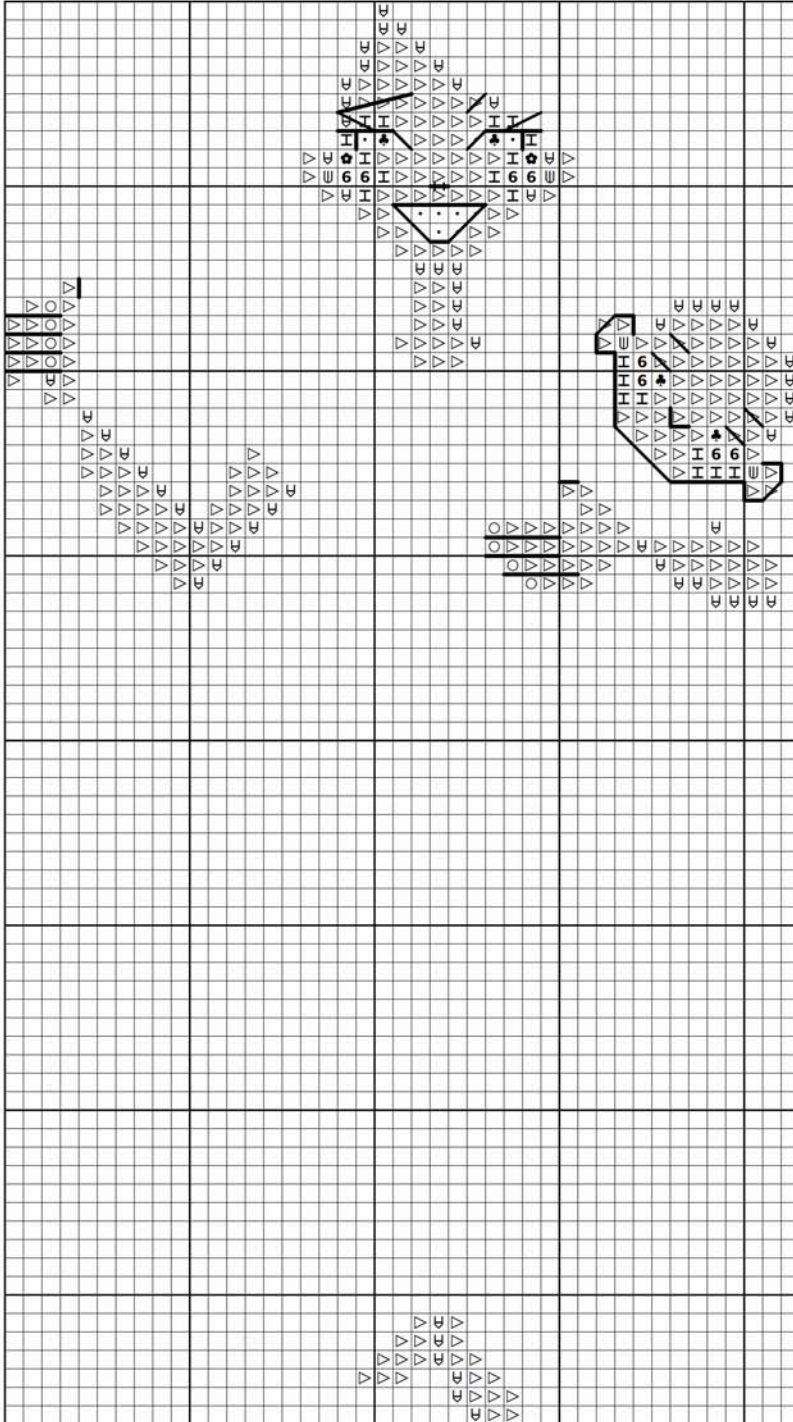
Gross Stitch Collection

Designed Exclusively for DMC Corporation by Brooke Nolan of Brooke's Books Publishing



My Work At Home Mom

Medium Light Skin Tone Mod.



Use 2 plies floss to cross stitch on fabric

Cross Stitch Key

Symbols	DMC	Color	Skeins
•	5200	Snow White	
▽	950	Spicy Peach Lt	
◁	3773	Spicy Peach Md	
◃	434	Brown Lt	
○	666	Bright Red	
♣	904	Parrot Green Vy Dk	
H	3713	Salmon Vy Lt	
6	3326	Rose Lt	
⊕	3688	Mauve Md	

Back Stitch Key

Symbols	DMC	Location
	310	Mom: (2 plies) Eyelashes / Baby: (2 plies) Eyelashes
	434	Mom: (2 plies) Eyebrows / Baby: (2 plies) Eyebrows
⚡	898	Mom: (2 plies) Nose
	3773	Baby: (2 plies) Outline of chin
	666	Mom: (2 plies) Mouth & thumb nails / Baby: (2 plies) Mouth
	433	Baby: (1 ply) Ears / Mom: (1 ply) Lines between fingers



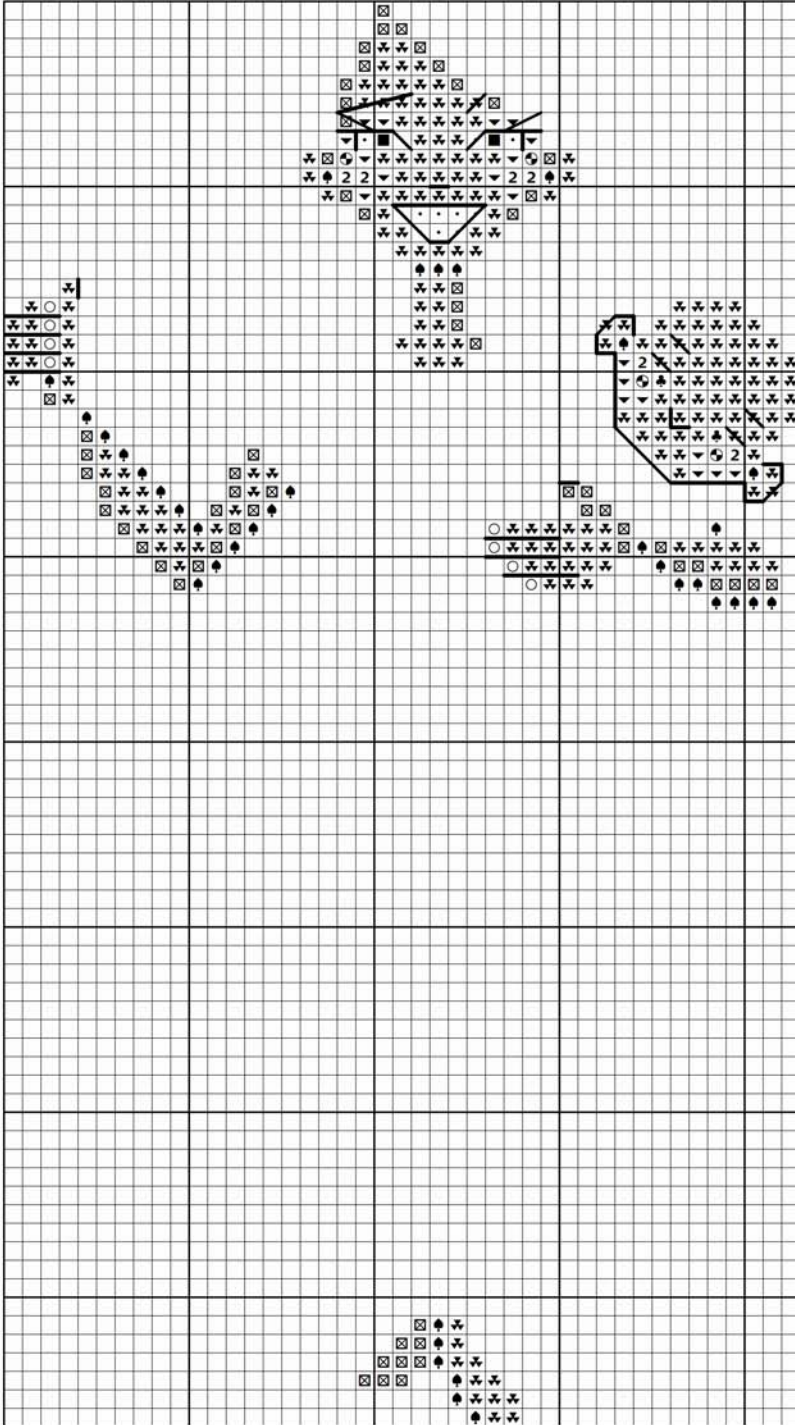
Gross Stitch Collection

Designed Exclusively for DMC Corporation by Brooke Nolan of Brooke's Books Publishing



My Work At Home Mom

Dark Skin Tone Mod.



Use 2 plies floss to cross stitch on fabric

Cross Stitch Key

Symbols	DMC	Color	Skeins
•	5200	Snow White	
■	310	Black	
▼	841	Beige Brown Lt	
⊠	840	Beige Brown Md	
♠	433	Brown Md	
○	666	Bright Red	
▼	223	Shell Pink Lt	
2	3687	Mauve	
⊗	3804	Dk Cyclamen Pink	
♣	904	Parrot Green Vy Dk	

Back Stitch Key

Symbols	DMC	Location
	310	Mom: (2 plies) Eyelashes / Baby: (2 plies) Eyelashes & mouth, (1 ply) Eyebrows
	433	Baby: (1 ply) Outline of ears and chin
	898	Mom: (2 plies) Eyebrows & nose, (1 ply) Lines between fingers
	666	Mom: (2 plies) Mouth & thumb nails



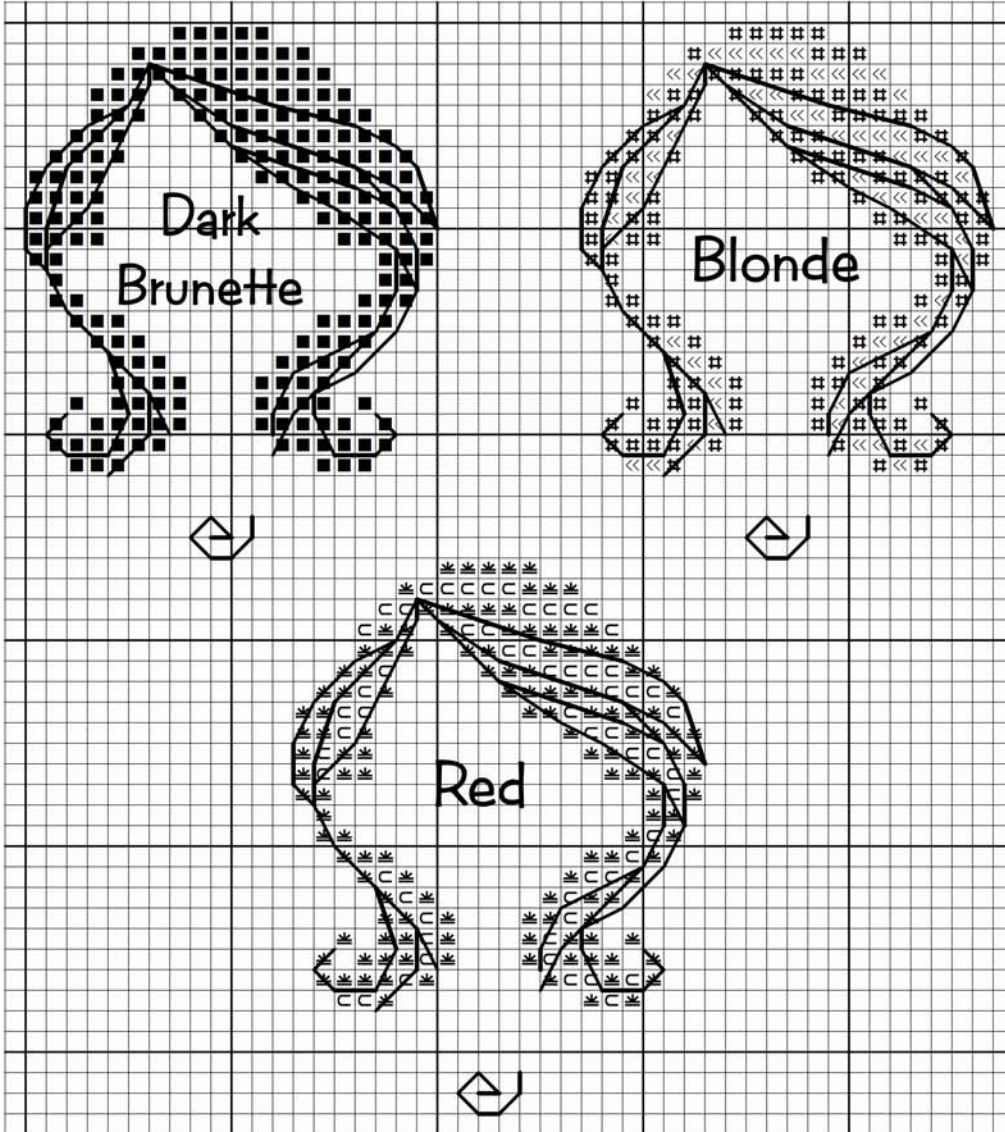
Gross Stitch Collection

Designed Exclusively for DMC Corporation by Brooke Nolan of Brooke's Books Publishing



My Work At Home Mom

Hair Color Mods



Use 2 plies floss to cross stitch on fabric

Cross Stitch Key			
Symbols	DMC	Color	Skeins
<<	3046	Yellow Beige Md	
#	167	Yellow Beige Vy Dk	
C	3776	Mahogany Lt	
✦	920	Copper Md	
■	310	Black	

Back Stitch Key

Symbols	DMC	Location
	898	Dk Brunette: (2 plies) Lines
	310	Dk Brunette: (1 ply) Baby's curl
	3823	Blonde: (2 plies) Lines
	167	Blonde: (2 plies) Baby's curl
	722	Red: (2 plies) Lines
	3776	Red: (2 plies) Baby's curl



Gross Stitch Collection

Designed Exclusively for DMC Corporation by Brooke Nolan of Brooke's Books Publishing

| ♥ My Grandma



Personalize with skin tone & eye color modifications.

DMC Corporation - ©2017 All rights reserved



Gross Stitch Collection

Designed Exclusively for DMC Corporation by Brooke Nolan of Brooke's Books Publishing

| My Grandma

The model was stitched with DMC floss over two threads on 28 count DMC Blue Glass Monaco fabric.
Dimensions: 82 x 88 stitches - Approximately 5.75" x 6.25"

In this order, cross stitch and back stitch the piece.

Finish the piece as desired.

Use 2 plies floss to cross stitch on fabric

Cross Stitch Key

Symbols	DMC	Color	Skeins
•	5200	Snow White	
■	310	Black	
▲	898	Coffee Brown Vy Dk	
▼	841	Beige Brown Lt	
⊠	840	Beige Brown Md	
♠	433	Brown Md	
⊞	167	Yellow Beige Vy Dk	
U	434	Brown Lt	
└	435	Brown Vy Lt	
┌	437	Tan Lt	
└┌	3823	Ult Pale Yellow	
▼	223	Shell Pink Lt	
2	3687	Mauve	
⊙	3804	Dk Cyclamen Pink	
I	3713	Salmon Vy Lt	
6	3326	Rose Lt	
⊕	3688	Mauve Md	
◇	3805	Cyclamen Pink	
*	819	Baby Pink Lt	
^	415	Pearl Gray	
♥	318	Steel Gray Lt	
◆	317	Pewter Gray	
◐	340	Blue Violet Md	
♥	333	Blue Violet Vy Dk	
P	581	Moss Green	
♣	904	Parrot Green Vy Dk	
☆	E3821	Gold	
Π	E168	Silver	
≡	4523	North Wind	

Back Stitch Key

Symbols	DMC	Location
—	310	Grandma: (1 ply) Eyelashes, nose, mouth & outline of silver glasses / Baby: (2 plies) Eyelashes & mouth, (1 ply) Eyebrows & curl / Cat: (1 ply) Mouth
—	898	Grandma: (1 ply) Lines between fingers / Cookies: (1 ply) Outlines
—	3823	Background: (2 plies) Sparkles
—	437	Sewing Basket: (2 plies) Knitting needles
+++	904	Flower: (1 ply) Leaf stems / Grandma's Green Shirt: (2 plies) Lines at collar and hem / Bottle: (1 ply) Measuring lines
+++	333	Grandma: (1 ply) Skirt outline / Hot Mitt: (1 ply) Outline / Sampler: (1 ply) Words / Sewing Basket: (2 plies) Floss skein
+++	3805	Cat: (1 ply) Nose / Sampler: (2 plies) Floss in needle / Sewing Basket: (2 plies) Pink yarn
—	317	Book: (1 ply) Pages
—	581	Flower: (2 plies) Leaf veins
+++	3799	Cat: (1 ply) Ears, stripes on top of head & paws
—	433	Baby: (1 ply) Ears & outline of chin
—	550	Grandma: (1 ply) Jacket & shoe details
—	E168	Sampler: (2 plies) Needle / Pin Cushion: (2 plies) 3 needles / Grandma: (2 plies) Glasses
+++	E3821	Grandma: (2 plies) Earring / Sampler: (2 plies) Frame screw / Book: (2 plies) Words
+++	4523	Sewing Basket: (2 plies) Floss skein



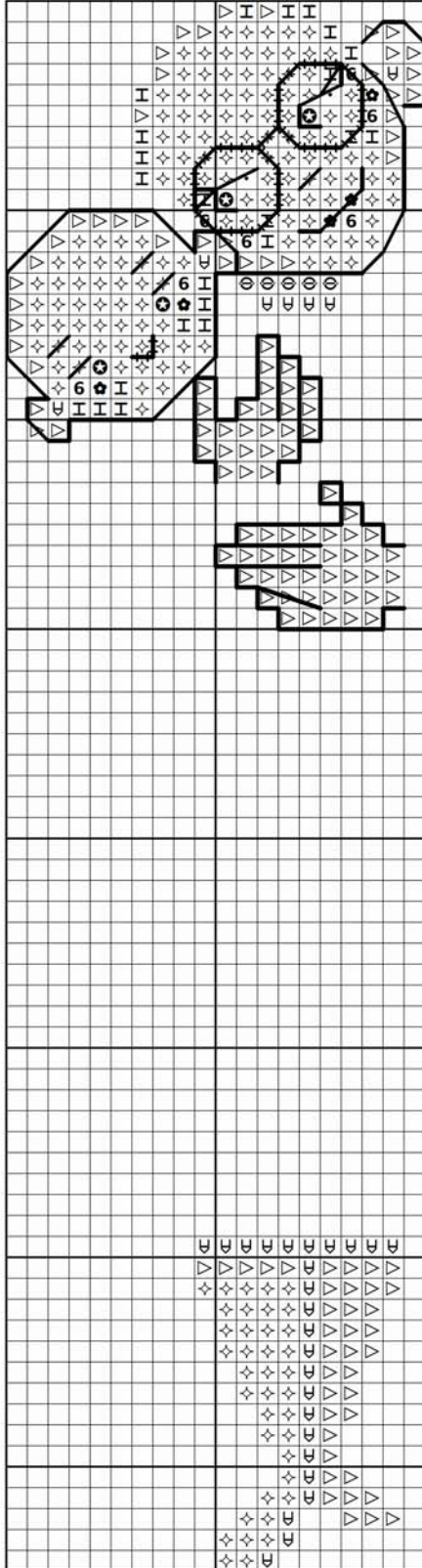
Gross Stitch Collection

Designed Exclusively for DMC Corporation by Brooke Nolan of Brooke's Books Publishing



My Grandma

Light Skin Tone Mod.



Use 2 plies floss to cross stitch on fabric

Cross Stitch Key

Symbols	DMC	Color	Skeins
•	5200	Snow White	1
◇	951	Peach Lt	1
▽	950	Spicy Peach Lt	1
◁	3773	Spicy Peach Md	1
⊖	842	Beige Brown Vy Lt	1
I	3713	Salmon Vy Lt	1
6	3326	Rose Lt	1
⊛	3688	Mauve Md	1
★	3843	Electric Blue	1

Back Stitch Key

Symbols	DMC	Location
—	433	Grandma: (1 ply) Lines between fingers
—	310	Grandma: (2 plies) Eyelashes / Baby: (2 plies) Eyelashes
—	898	Grandma: (2 plies) Nose, (1 ply) Mouth
+++	3804	Grandma: (2 plies) Glasses / Baby: (2 plies) Mouth
—	434	Grandma: (1 ply) Outline hands, outline ear & chin / Baby: (2 plies) Eyebrows, (1 ply) Outline of ears & head



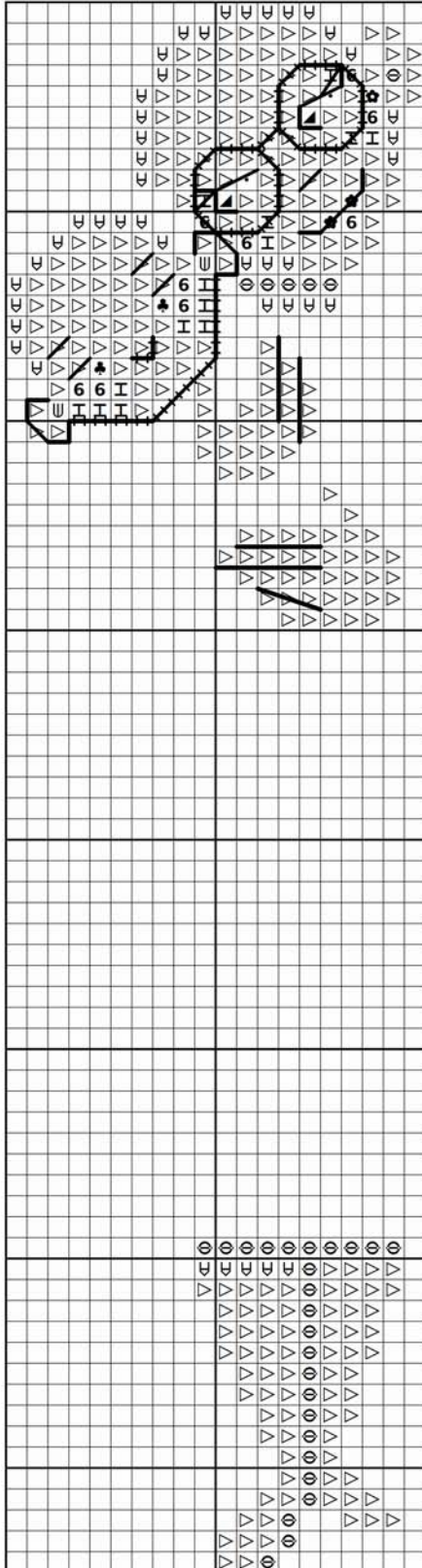
Gross Stitch Collection

Designed Exclusively for DMC Corporation by Brooke Nolan of Brooke's Books Publishing



My Grandma

Medium Light Skin Tone Mod.



Use 2 plies floss to cross stitch on fabric

Cross Stitch Key

Symbols	DMC	Color	Skeins
•	5200	Snow White	1
▽	950	Spicy Peach Lt	1
◀	3773	Spicy Peach Md	1
⊖	842	Beige Brown Vy Lt	1
∩	434	Brown Lt	1
▲	898	Coffee Brown Vy Dk	1
♣	904	Parrot Green Vy Dk	1
I	3713	Salmon Vy Lt	1
6	3326	Rose Lt	1
⊗	3688	Mauve Md	1

Back Stitch Key

Symbols	DMC	Location
—	433	Baby: (1 ply) Ears
—	310	Grandma: (2 plies) Eyelashes / Baby: (2 plies) Eyelashes
—	898	Grandma: (2 plies) Nose, (1 ply) Mouth & lines between fingers
+++	3804	Grandma: (2 plies) Glasses / Baby: (2 plies) Mouth
—	3773	Baby: (2 plies) Outline chin
—	434	Baby: (2 plies) Eyebrows



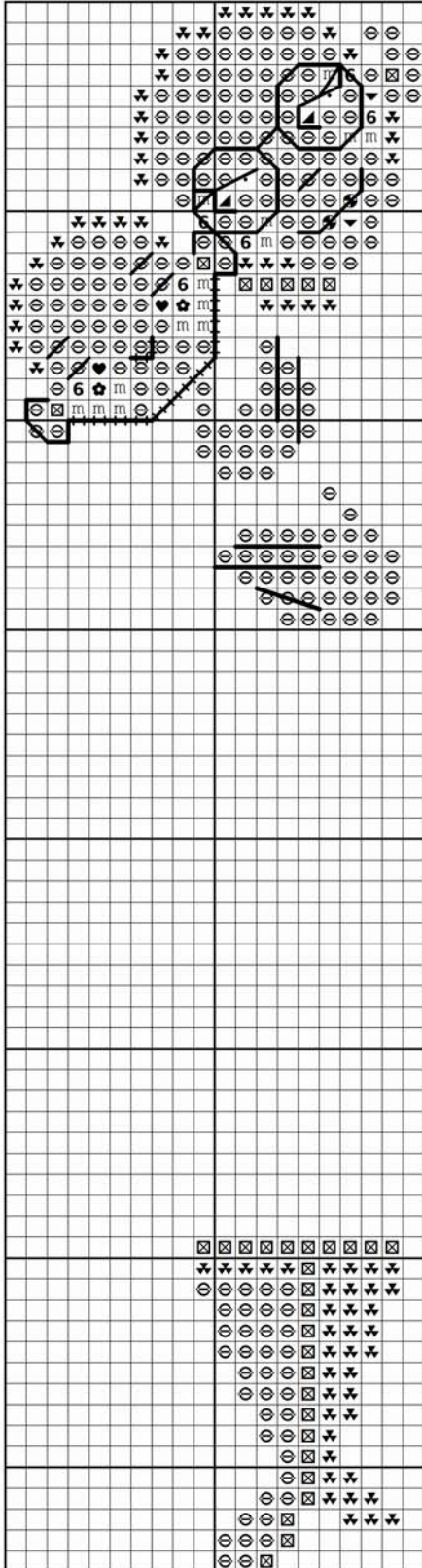
Gross Stitch Collection

Designed Exclusively for DMC Corporation by Brooke Nolan of Brooke's Books Publishing



My Grandma

Medium Dark Skin Tone Mod.



Use 2 plies floss to cross stitch on fabric

Cross Stitch Key

Symbols	DMC	Color	Skeins
•	5200	Snow White	1
⊖	842	Beige Brown Vy Lt	1
▽	841	Beige Brown Lt	1
⊗	840	Beige Brown Md	1
▲	898	Coffee Brown Vy Dk	1
m	224	Shell Pink Vy Lt	1
6	3326	Rose Lt	1
▼	223	Shell Pink Lt	1
⊛	3688	Mauve Md	1
⊕	3804	Dk Cyclamen Pink	1
♥	333	Blue Violet Vy Dk	1

Back Stitch Key

Symbols	DMC	Location
—	433	Grandma: (1 ply) Lines between fingers / Baby: (2 plies) Eyebrows, (1 ply) Ears
—	310	Grandma: (2 plies) Eyelashes / Baby: (2 plies) Eyelashes
—	898	Grandma: (1 ply) Mouth, (2 plies) Nose
++++	841	Baby: (2 plies) Chin outline
++++	3804	Baby: (2 plies) Mouth
—	E168	Grandma: (2 plies) Glasses